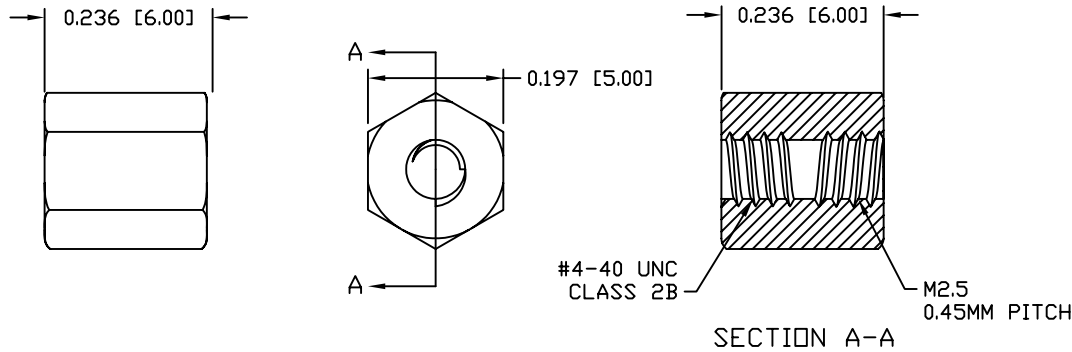
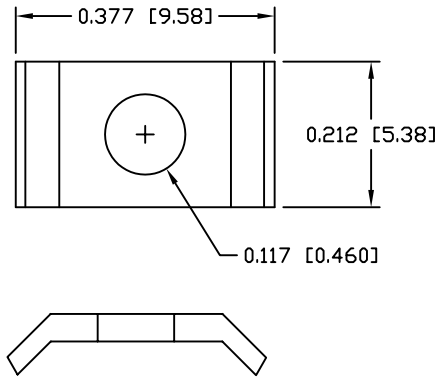


REV	DATE	DESCRIPTION	APP
A	06-MAR-03	ECN 0368	
B	23-SEP-04	ECN 0440	

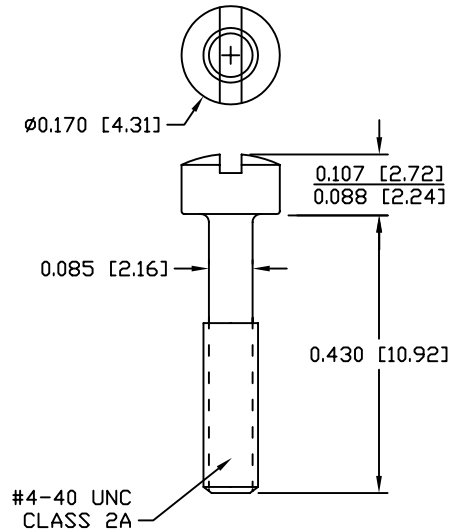
HEX EXTENDER  
QTY: 2 EACH



SADDLE WASHER  
QTY: 2 EACH



CAPTIVE SCREW  
QTY: 2 EACH



HEX EXTENDER

1. MATERIAL: BRASS
2. FINISH: BRIGHT NICKEL PLATING
3. DIMENSIONS: INCHES [MM]
4. TOLERANCE: ±0.005 [0.127] UNLESS OTHERWISE STATED

SADDLE WASHER

1. MATERIAL: C1008 - C1010 STEEL
2. FINISH: BRIGHT ZINC (HEXAVALENT CHROMIUM FREE)
3. DIMENSIONS: INCHES [MM]
4. TOLERANCE: ±0.010 [0.254] UNLESS OTHERWISE STATED

CAPTIVE SCREW

1. MATERIAL: 12L14 FREE MACHINING STEEL
2. FINISH: BRIGHT ZINC (HEXAVALENT CHROMIUM FREE)
3. DIMENSIONS: INCHES [MM]
4. TOLERANCE: ±0.010 [0.254] UNLESS OTHERWISE STATED

UNLESS OTHERWISE SPECIFIED		SIGNATURES	DATE	Northern Technologies			
1. DIMENSIONS IN INCHES [MM] 2. TOLERANCE UNLESS OTHERWISE SPECIFIED .XXX ± .005 [0.127] .XX ± .02 [0.508] .X ± .03 [0.762] FRACT. ± 1/32 ANGULAR ± 1/2°	DRAWN	JSD	01-MAR-02	PART NUMBER C89014051 DESCRIPTION M2.5 HEX EXTENDER KIT			
	CHECKED	SCN	01-MAR-02				
	ENG				SHEET	CODE	DWG NO.
	ISSUED		01-MAR-02	1	420_209	0002-420-209	
		SCALE	N.T.S.			SHEET 1 OF 1	